

RVH8023

TOPMOUNT WORKSTATION SINK

RUVATI[®]
SPECIFICATION SHEET

MATERIAL

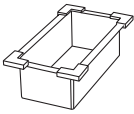
True 16 Gauge Thickness
Premium T304 Grade Stainless Steel
18/10 Chromium/Nickel Content
Commercial Brushed Finish

FEATURES

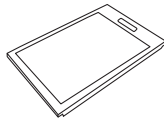
- Heavy duty sound guard padding and undercoating
- Slanted bottom with elegant drain grooves for easy draining
- Single-Tier Ledge for Accessories



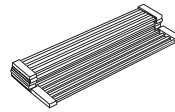
IN THE BOX



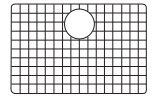
Colander
[RVA1327]



Cutting Board
[RVA1217]



Folding Rack
[RVA1395]



Rinse Grid
[RVA68023]



Basket Strainer
[RVA1025]



Drain Cover
[RVA1035]



Mounting Clips
[RVA11042]



Cut-out
Template

NOMINAL DIMENSIONS

Exterior: 25" (wide) x 22" (front-to-back)
Interior Bowl: 23" (wide) x 16" (front-to-back)
Bowl Depth: 10"
Minimum Cabinet Size: 27" wide
Drain Hole Size: 3-1/2"

Installation Type:

Topmount

Inside Corners:

Rounded

Drain Location:

Rear Center

RUVATI USA

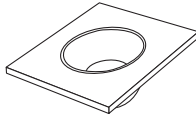
www.ruvati.com

Phone: 1.855.478.8284
Email: support@ruvati.com

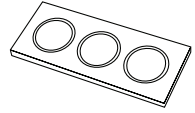
OPTIONAL ACCESSORIES (SOLD SEPARATELY)



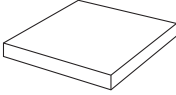
Deep Basket
Disposal Flange
[RVA1049ST]



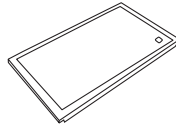
Mixing Bowl
and Platform
[RVA1288]



Condiment
Serving Tray
[RVA1377]

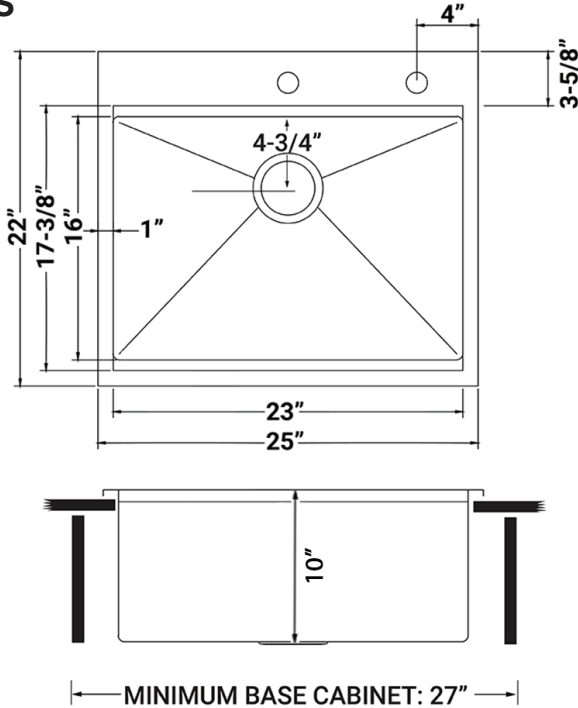


Butcher Block
[RVA2445ACA]



Black Plastic
Cutting Board
[RVA1217BLK]

DIMENSIONS



Register your product at www.ruvati.com/register.